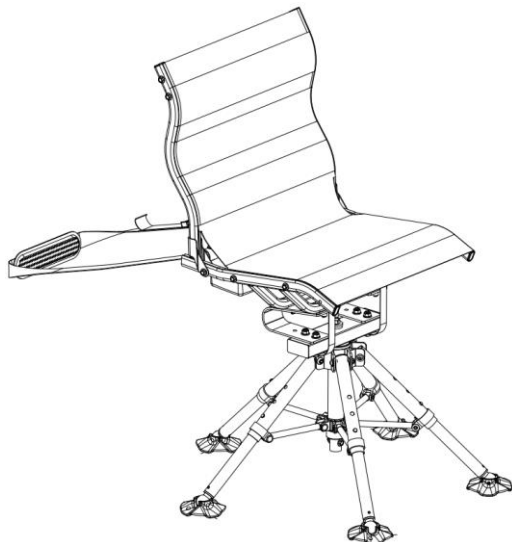




# NEXCAM®



## AXIS RG 360 CHAIR INSTRUCTION MANUAL

NA70119 Nexcam AXIS RG 360

Thank you for purchasing our NEXCAM Chair. This product is designed by hunters, for hunters. It is engineered for safety, comfort and stealth, putting the odds in your favor when the moment of truth arrives. Constructed with only the highest quality materials it's built for years of satisfying hunts.

Read this instruction manual and all warnings in its entirety before using this product.

If you have any questions on assembly, use, safety warnings, or anything else, please contact us by email at [support@Nexcam.com](mailto:support@Nexcam.com).

**YOU MUST READ, UNDERSTAND, FOLLOW ALL WARNINGS AND INSTRUCTIONS BEFORE USING THIS PRODUCT!**

**DO NOT EXCEED Maximum Weight Limit - 300lbs. Exceeding this limit will damage chair and may cause personal injury.**

**GROUND USE ONLY! NEVER USE AT HEIGHTS ABOVE GROUND LEVEL!**

**USE ONLY ON LEVEL SURFACE.**

**ALWAYS BE SURE ALL LEG SPRING PINS ARE ENGAGED THROUGH LEGS AND CHAIR IS BEFORE USING CHAIR.**

**NEVER tip chair so feet lift off ground while seated in chair.**

**DO NOT use for any purpose other than intended use.**

To avoid injuries to fingers and pinch hazards, use care when folding seat base and adjusting spring stopper knob.

**Do not modify, jump, bounce or stand on this product.**

**Questions contact NEXCAM by email at [support@Nexcam.com](mailto:support@Nexcam.com).**

Always follow safe weapon/firearm handling practices.

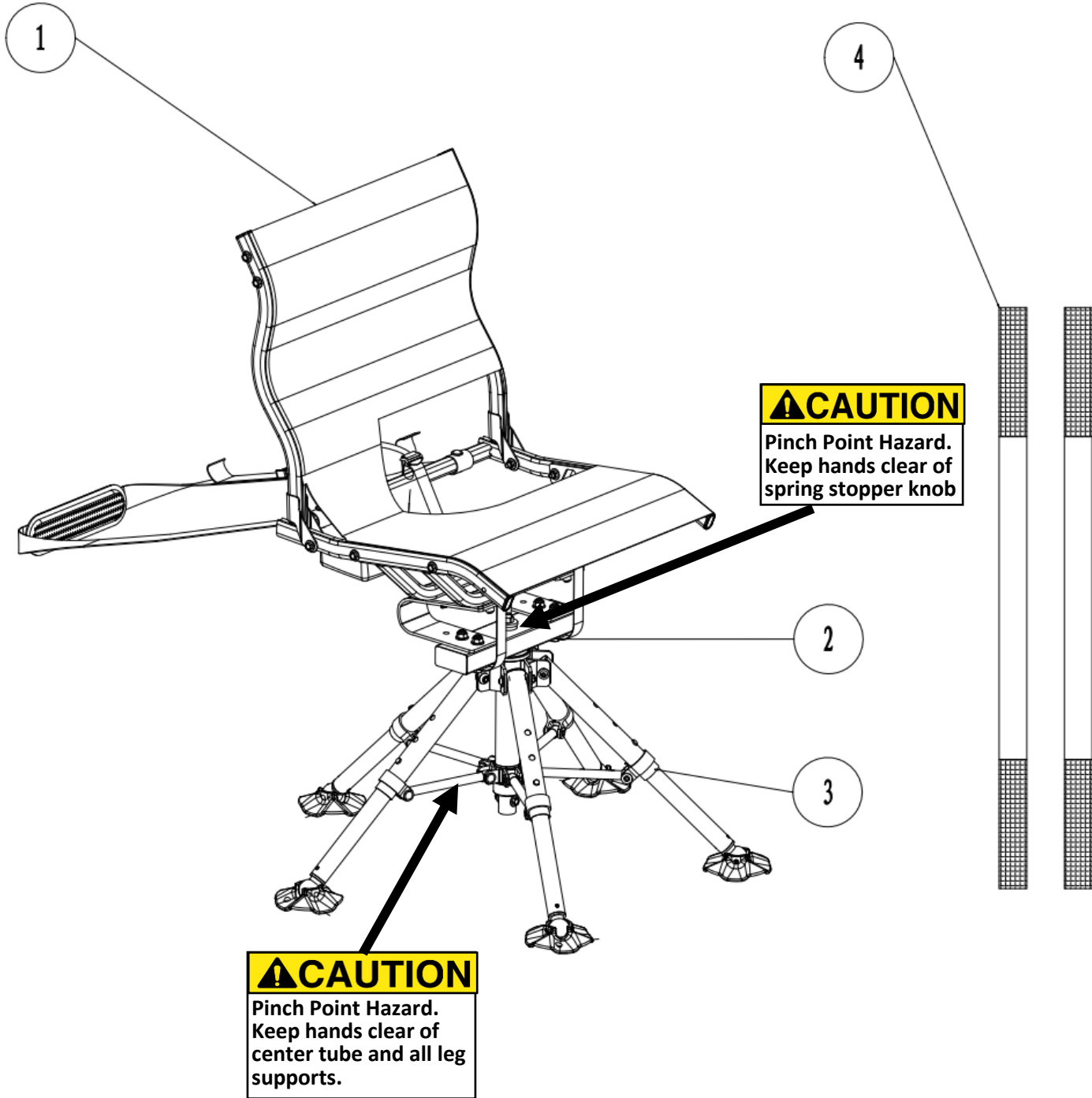
**FAILURE TO FOLLOW THESE INSTRUCTIONS CAN RESULT IN SERIOUS INJURY OR DEATH!**

### **⚠ WARNING**




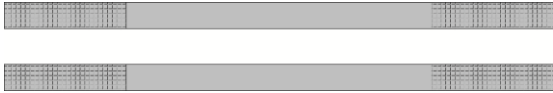
**THIS INSTRUCTION MANUAL MUST ALWAYS ACCOMPANY THIS PRODUCT AND BE TRANSFERRED WITH IT UPON CHANGE OF OWNERSHIP, WHEN LOANED, OR PRESENTED TO ANOTHER PERSON.**

**QUESTIONS?** Email [support@Nexcam.com](mailto:support@Nexcam.com) for assistance.

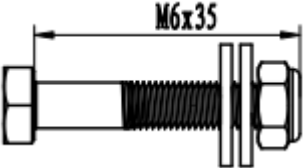
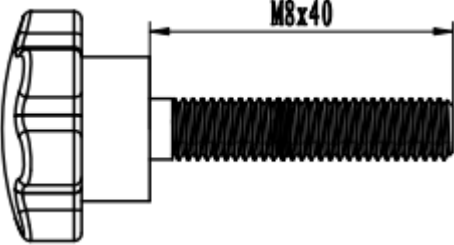
# Chair Diagram



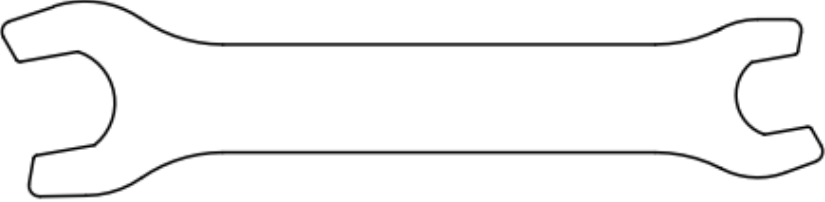
# Parts List

1	Seat with Carry Strap & Storage Bag		Qty <b>1</b>
2	Seat Post		Qty <b>1</b>
3	Seat Base		Qty <b>1</b>
4	Velcro Strap		Qty <b>2</b>

# Hardware

Step 4	M6X35 (with steel washer)	 <p>A technical drawing of an M6x35 bolt assembly. It shows a bolt with a hexagonal head on the left, a threaded section in the middle, a flat steel washer in the center, and a hexagonal nut on the right. A dimension line above the bolt indicates a length of M6x35.</p>	Qty 1
Step 6	M8X40 Knob	 <p>A technical drawing of an M8x40 knob assembly. It shows a knob with a curved, ribbed face on the left and a threaded shaft extending to the right. A dimension line above the shaft indicates a length of M8x40.</p>	Qty 4

# Tools Required

1	M8 Wrench (2 pcs)  (Included)	 <p>A technical drawing of an open-end wrench. It has two open ends with curved jaws and a central handle.</p>
---	--	--

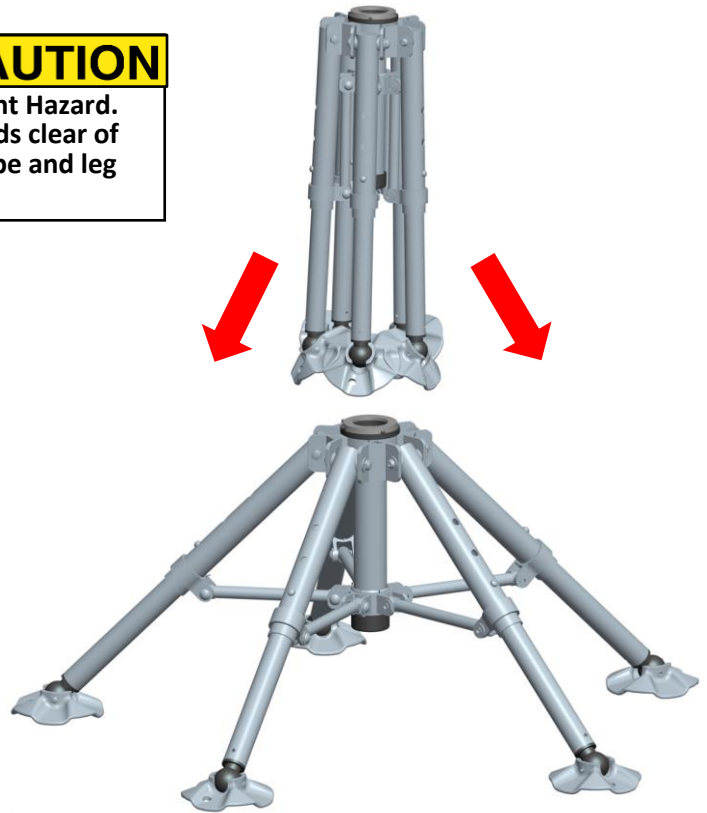
# Setup Instructions

## Step 1:

### OPEN SEAT BASE

Open seat base by pulling legs outward and sliding leg supports down center tube as shown in Figure 1.

Note – To fold Seat Base, reverse above steps.



**Figure 1**  
**Open Seat Base**

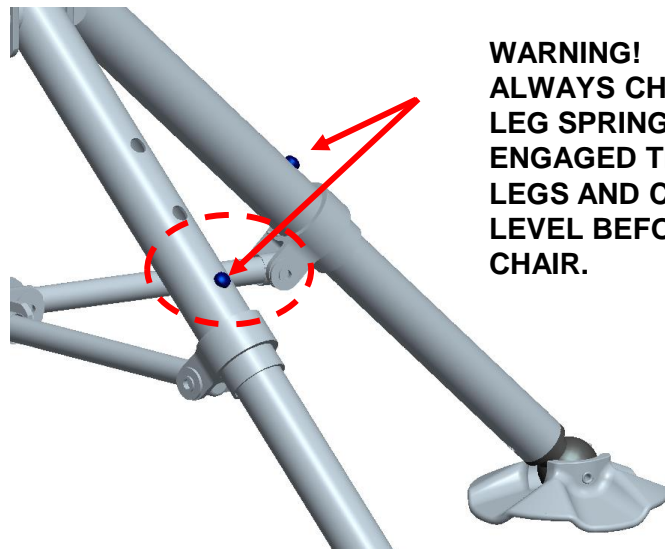
## Step 2:

### SEAT / LEG HEIGHT ADJUSTMENT:

Adjust height by pressing spring pin on leg and pull leg out (higher seat height) or push leg in (lower seat height) until spring pin engages through leg. See Figure 2.

Repeat for remaining legs.

**WARNING! All leg feet must sit flat on ground, so chair is in level position. If not reposition chair or adjust leg height.**



**WARNING!**  
**ALWAYS CHECK ALL**  
**LEG SPRING PINS ARE**  
**ENGAGED THROUGH**  
**LEGS AND CHAIR IS**  
**LEVEL BEFORE USING**  
**CHAIR.**

**Figure 2**  
**Seat Height Adjustment**

# Setup Instructions

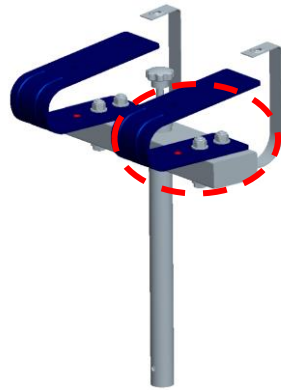
## Step 3:

Before installing seat post, select desired spring positions by spring adjust holes. See Figure 3.

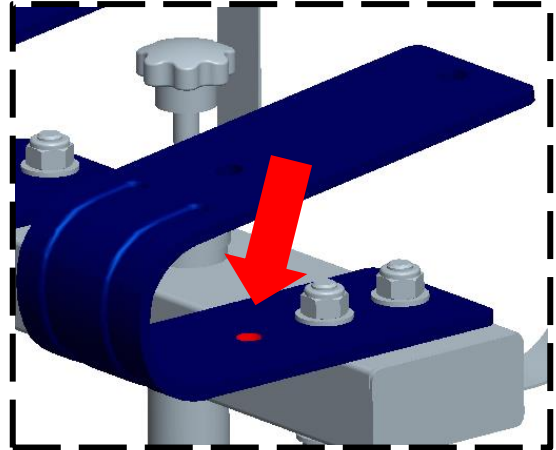
Choose spring positions based on your needs and weight for the best rocking feel.

**Spring Position 1**  
Preassembled, if you select this position, proceed to Step 4.

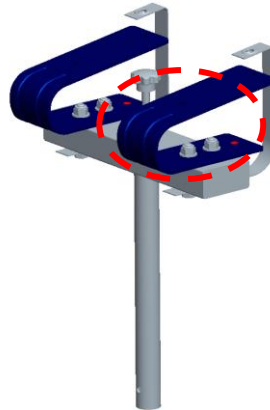
**Spring Position 2**  
If you select this position, disassemble the bolts and adjust spring position as Figure 3. Reassemble spring and webbing stopper straps using bolts and securely tighten bolts.



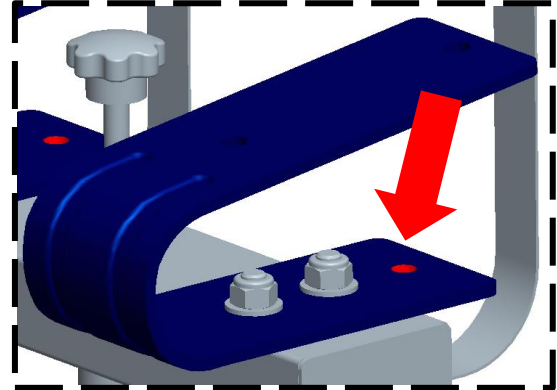
**Spring Position 1**



**Increased rock/movement**



**Spring Position 2**



**Figure 3**

**Decreased rock/movement**

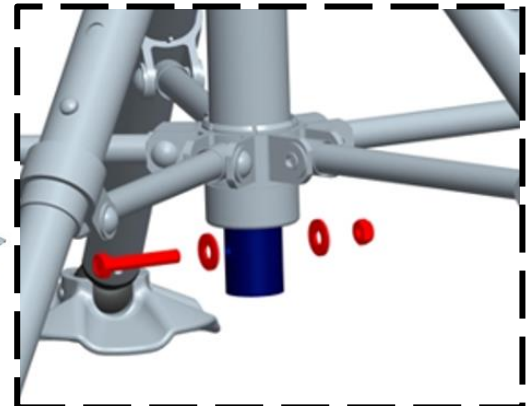
**Select Spring Position**

## Step 4:

Install Seat Post (#2) through Seat Base (#3) Tube.

Secure using (1) M6x35 bolt with steel washers and locknut. See Figure 4.

Securely tighten bolt.



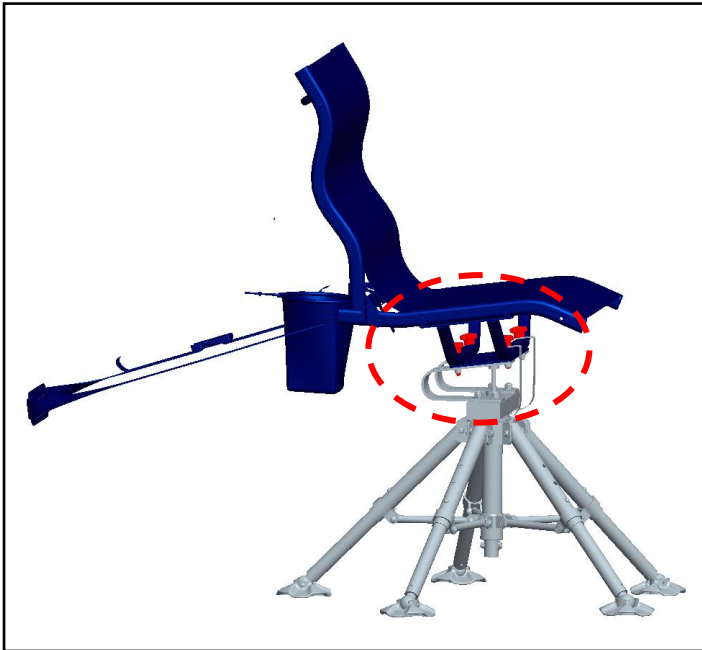
**Figure 4**

**Install Seat Post into Seat Base**

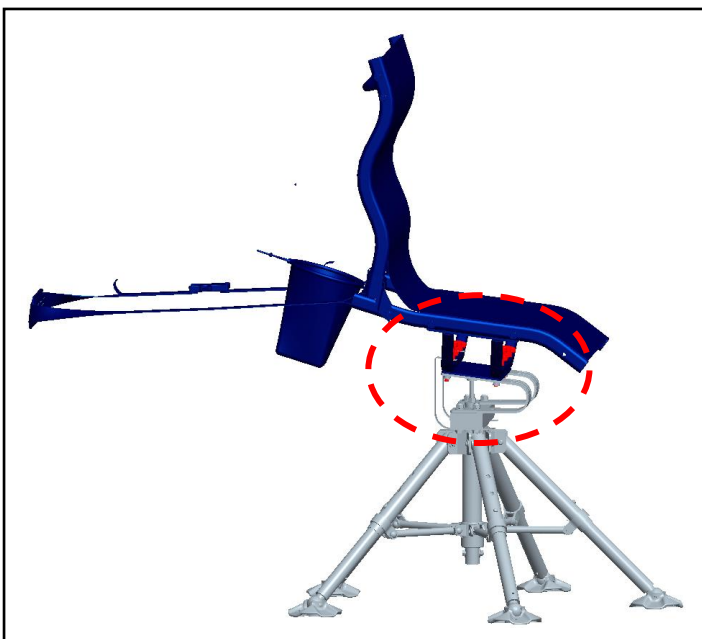
# Setup Instructions

## Step 5:

Before installing seat, select desired spring positions by placing seat on springs for Alert/Shooting or Relax/Camping position. See Figure 5.



**SPRING POSITION  
FOR  
ALERT / SHOOTING**



**SPRING POSITION  
FOR  
RELAX / CAMPING**

Figure 5 Select Spring Position



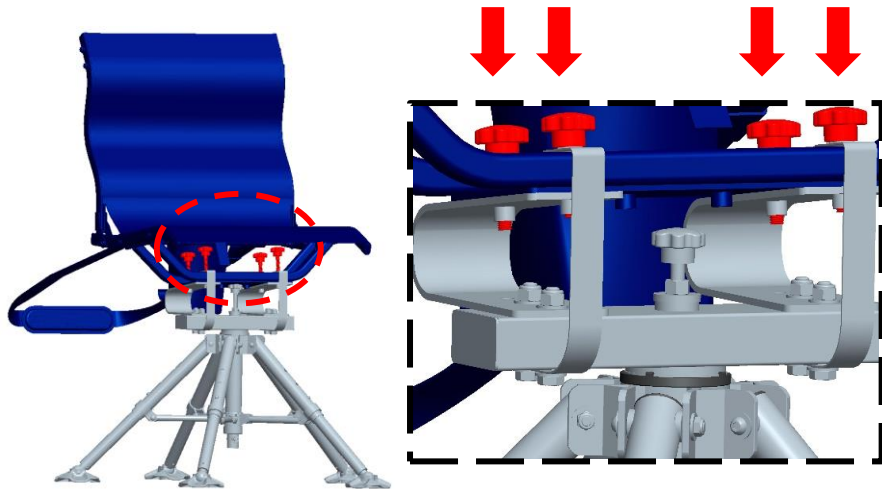
# Setup Instructions

## Step 6:

Place Seat(#1) on top of springs on seat post (#2) and webbing stopper straps on top of seat tubes.

Assemble seat, seat post and webbing stopper straps using four (4) M8x40 knob as shown in Figure 6.

Securely tighten

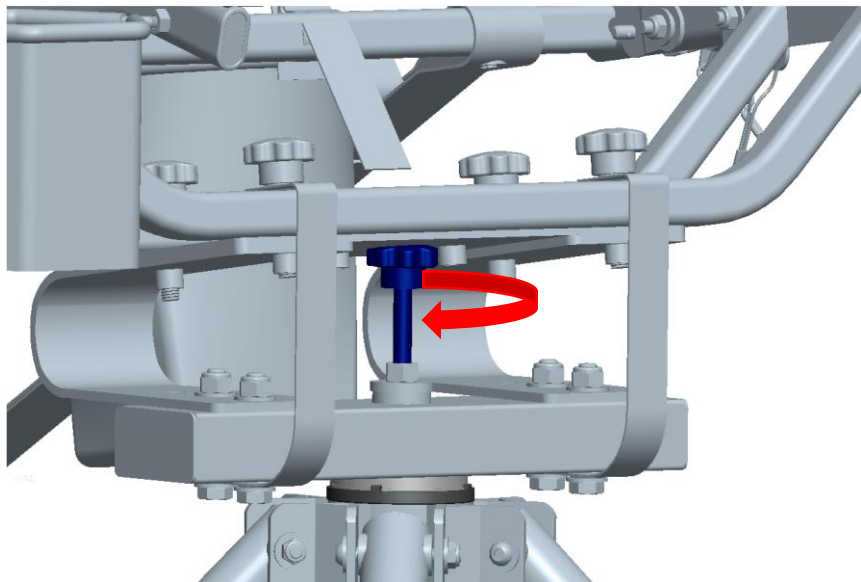


**Figure 6**  
**Install Seat**

## Step 7:

Adjust Spring Stopper Knob height to adjust amount of rocker travel as shown in Figure 7.

*This is used to steady chair when leaning forward or back depending on spring position by providing a solid stop point for rocker.*



**Figure 7**  
**Spring Stopper Knob**



## USE:

### **WARNING**

**USE ONLY ON LEVEL SURFACE.** If chair is not stable or tips, do not use and select another level surface.

**ALWAYS BE SURE ALL LEG SPRING PINS ARE ENGAGED THROUGH LEGS AND CHAIR IS LEVEL BEFORE USING CHAIR.**

**ALWAYS BE SURE ALL LEGS ARE CONTACTING GROUND AND SEAT IS LEVEL BEFORE USING CHAIR.**

**NEVER** tip chair so feet lift off ground while seated in chair.

To avoid injuries to fingers and pinch hazards, use care when folding seat base.

To avoid injuries to fingers and pinch hazards, only adjust spring stopper knob when no one is seated in chair.

Prior to every use, inspect chair for damage. **DO NOT USE IF ANY DAMAGE IS VISIBLE OR SUSPECTED**, including but not limited to cuts, frayed portions, corrosion, or other damage to chair. If damage is visible or suspected, **DO NOT USE THE PRODUCT**. If there are any questions, **DO NOT** use the product and contact NEXCAM by email at [support@Nexcam.com](mailto:support@Nexcam.com). for assistance. **FAILURE TO FOLLOW THESE INSTRUCTIONS CAN RESULT IN SERIOUS INJURY OR DEATH!**

Place Chair on a level surface with seat base flat on surface. Adjust seat height as shown in setup instructions so seat height is at comfortable height and all legs are contacting ground.

While next to chair, adjust Spring Stopper Knob as shown in setup instructions to adjust amount of Spring Travel.

Chair is ready to be used.

## MAINTENANCE AND STORAGE:

### **WARNING**

**Do not modify this product in any way by making repairs, replacing parts, altering, adding or attaching anything to it except if explicitly authorized in writing by NEXCAM.**

**Use only NEXCAM authorized replacement parts. The use of unauthorized replacement parts may result in serious injury or death.**

**Proper maintenance and inspection is required for this product.**

**This product is used to support your weight. Never use a chair that is damaged in any way. Do not use if it is not wholly free of damage. If you have questions, contact NEXCAM by email at [support@Nexcam.com](mailto:support@Nexcam.com) for assistance.**

**Failure to follow these instructions can lead to serious injury or death.**

Should any damage occur or to purchase NEXCAM replacement parts, contact customer service by email at [support@Nexcam.com](mailto:support@Nexcam.com) for assistance.

Care and maintenance is required to assure trouble free performance of your chair.

Store this product indoors in a clean, dry environment free from direct sunlight, harmful chemicals, excessive heat and dust. Exposure to sunlight, excessive heat and the elements can weaken material over time.

## LIMITED WARRANTY\*.

**LIMITED ONE YEAR WARRANTY.** WE WARRANT THIS PRODUCT AGAINST ANY MANUFACTURER DEFECTS IN MATERIALS AND WORKMANSHIP FOR PERIOD OF ONE YEAR FROM DATE OF PURCHASE FROM AUTHORIZED RETAILER TO THE **ORIGINAL OWNER**. WE WILL REPAIR OR REPLACE ANY PART FOUND DEFECTIVE IF THE UNIT CLAIMED TO BE DEFECTIVE IS RETURNED TO US POSTAGE PREPAID, WITHIN WARRANTY PERIOD. CONTACT CUSTOMER SERVICE AT [SUPPORT@NEXCAM.COM](mailto:support@nexcaml.com) FOR WARRANTY CLAIMS.

This warranty is void if any product has been subjected to misuse, abuse, neglect (including but not limited to improper maintenance or failure to follow instructions), storage, improper use, misapplication, accident, normal wear, modification, adjustment, or repair.

NO OTHER WARRANTIES WHETHER EXPRESSED OR IMPLIED, INCLUDING WARRANTIES OF MERCHANTABILITY AND FITNESS FOR A PARTICULAR PURPOSE, SHALL APPLY TO THE PRODUCT.

### LIMITATION OF LIABILITY

It is expressly understood that our liability for this product, whether due to breach of warranty, negligence, strict liability, or otherwise, is limited to repair of the product as stated above. We will not be liable for any other injury, loss, damage, or expense, whether direct or consequential, including but not limited to loss of use, income, profit, or damage to material from use of this product howsoever caused.

### SERVICING YOUR PRODUCT:

If you need repairs or have warranty issues, contact Customer Service at [support@Nexcaml.com](mailto:support@Nexcaml.com) for assistance.

### PLEASE NOTE:

We reserve the right to make substitutions on warranty coverage for any reason, including but not limited to available parts.

\*Limited Warranty to the Original Owner.

NEXCAM INC.  
405 Annandale Blvd.,  
Annandale, MN 55302  
Email: [support@Nexcaml.com](mailto:support@Nexcaml.com)  
Website: <https://nexcaml.com>

